

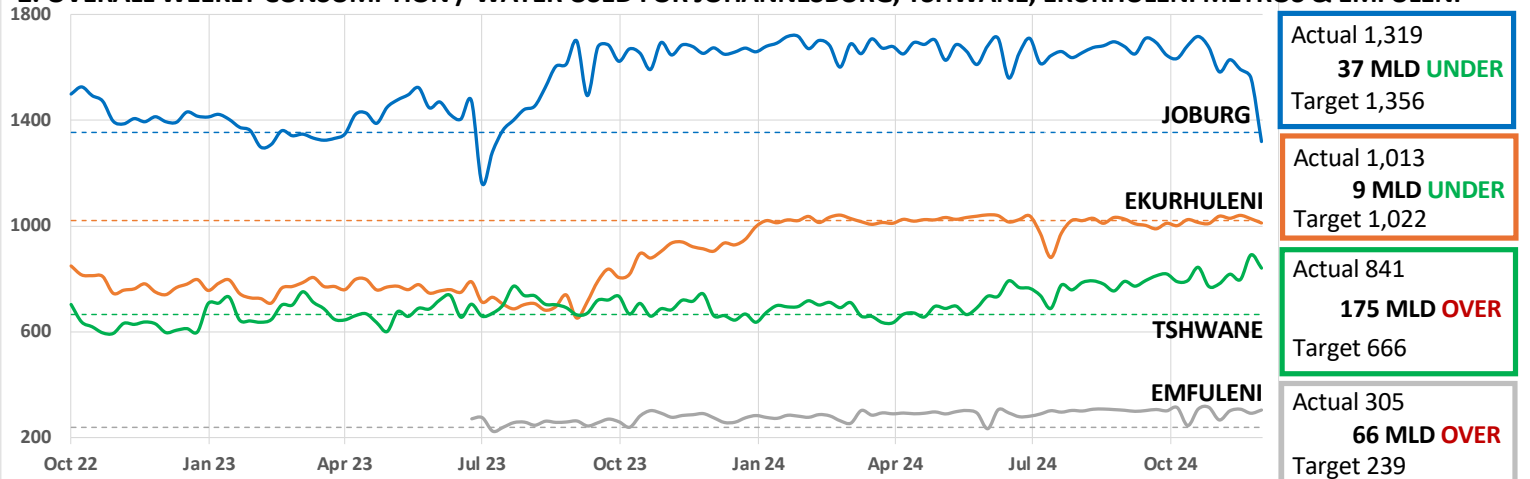
## GAUTENG WATER SECURITY DASHBOARD

1. METRO WATER CONSUMPTION	TOTAL	Joburg	Ekurhuleni	Tshwane	Emfuleni
This Week Average Daily Use (MLD)	3,478	1319	1013	841	305
Last Week Average Daily Use - corrected (MLD)	3,773	1,560	1,029	891	293
Water Use Efficiency Target Use (MLD)	3,283	1,356	1,022	666	239
DIFFERENCE BETWEEN TARGET AND ACTUAL (MLD)	195	37	9	175	66
% Deviation from target use	6%	-3%	-1%	26%	28%
Gross Per capita use (l/cd)	246	216	249	211	423
Increase/Decrease from previous week*	↓	↓	↓	↓	↑

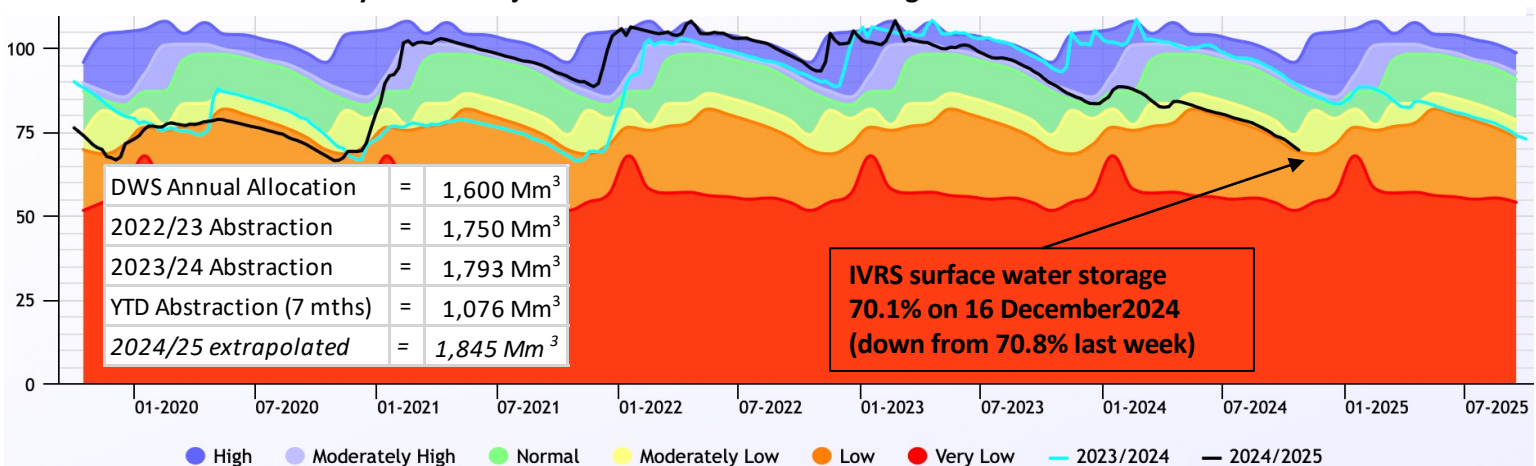
\* ↓ Decrease from last week, but above target    ↑ Increase from last week, but in target    ↓ Decrease, within target    ↑ Increase

- MLD = millions of litres per day, the common measurement of total water use for cities
- WUE = Water use efficiency targets is the target demand that matches the licence conditions of Rand Water.
- Weekly demand figures are from Rand Water meter readings.
- Due to completion of infrastructure upgrade work at Eikenhof, water supply was constrained, resulting in demand figures dropping significantly. The system is currently recovering from the resulting widespread outages.
- Metro water use has thus decreased overall in the past week with hot weather continuing across the province, with combined use now **6%** above target. All major users are using more water than their water use efficiency targets.

## 2. OVERALL WEEKLY CONSUMPTION / WATER USED FOR JOHANNESBURG, TSHWANE, EKURHULENI METROS &amp; EMFULENI



## 3. IVRS SYSTEM STATUS – 5-year Vaal Major combined surface water storage



- The 5-year Vaal Major system storage is shown as an indication that it is tracking lower than in the previous 3 years. DWS Restrictions are implemented on the IVRS when dam levels are below 60% at the beginning of the hydrological year starting in May of each year. Should over-abstraction continue, and rainfall be lower than normal, the DWS model is likely to indicate that restrictions be imposed in May 2025. Sources: <https://www.dws.gov.za/niwis2/SurfaceWaterStorage> and <https://www.dws.gov.za/Hydrology/Weekly/RiverSystems.aspx?river=IV>
- The weekly weather forecast shows cooler weather across Gauteng with plenty of rain forecast for the next week.
- All water users are urged to use water sparingly; to refrain from using tap water to irrigate gardens, wash down hard-surfaces etc.